



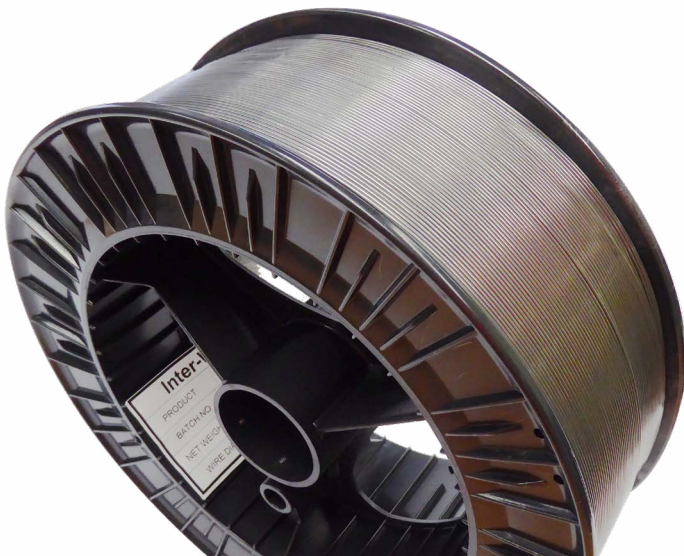
Inter-Steel stock and supply a range of quality Flux Core wire solutions for wear resistance weld repair and overlay reclamation processes for improved productivity and enhanced equipment durability.

With a wide variety of wear resistant alloys designed to reduce maintenance, the superior welding characteristics of Inter-Steel's cored wires provide higher deposition rates and consistency over a wide range of welding parameters in open arc, gas shielded or submerged arc processes.

Agglomerated flux is also available to provide a single source of both flux and wire.

Typical applications include:

- Dozer Blades
- Buckets
- Sizers
- Hammers
- Agriculture points
- Overlay spot repairs



Inter-Weld Hard face FCAW	Packaging	15Kgs	25Kgs	125Kgs	250Kgs
Size 1.2		X	-	-	-
Size 1.6		X	-	-	-
Size 2.8		-	-	-	X
Size 3.2		-	X	-	X